

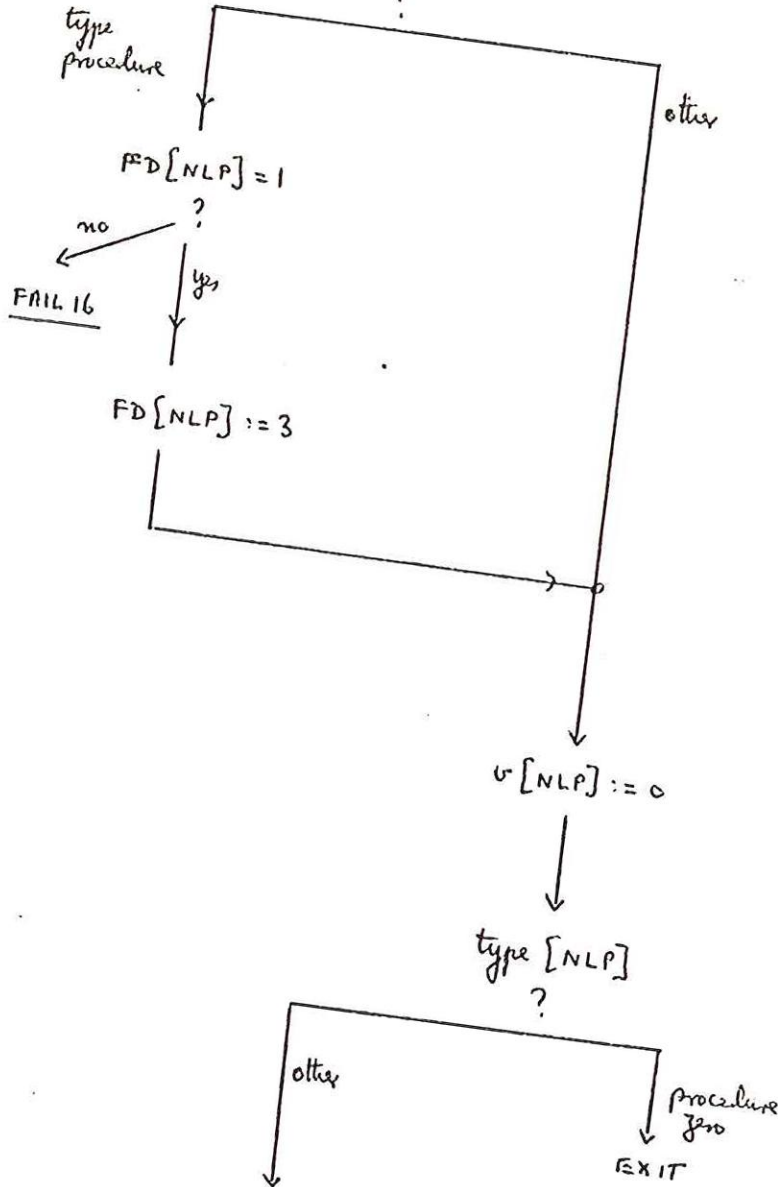
FCLAPS

WM := -1

Erase block stopped at NLP+4

type [NLP]

?



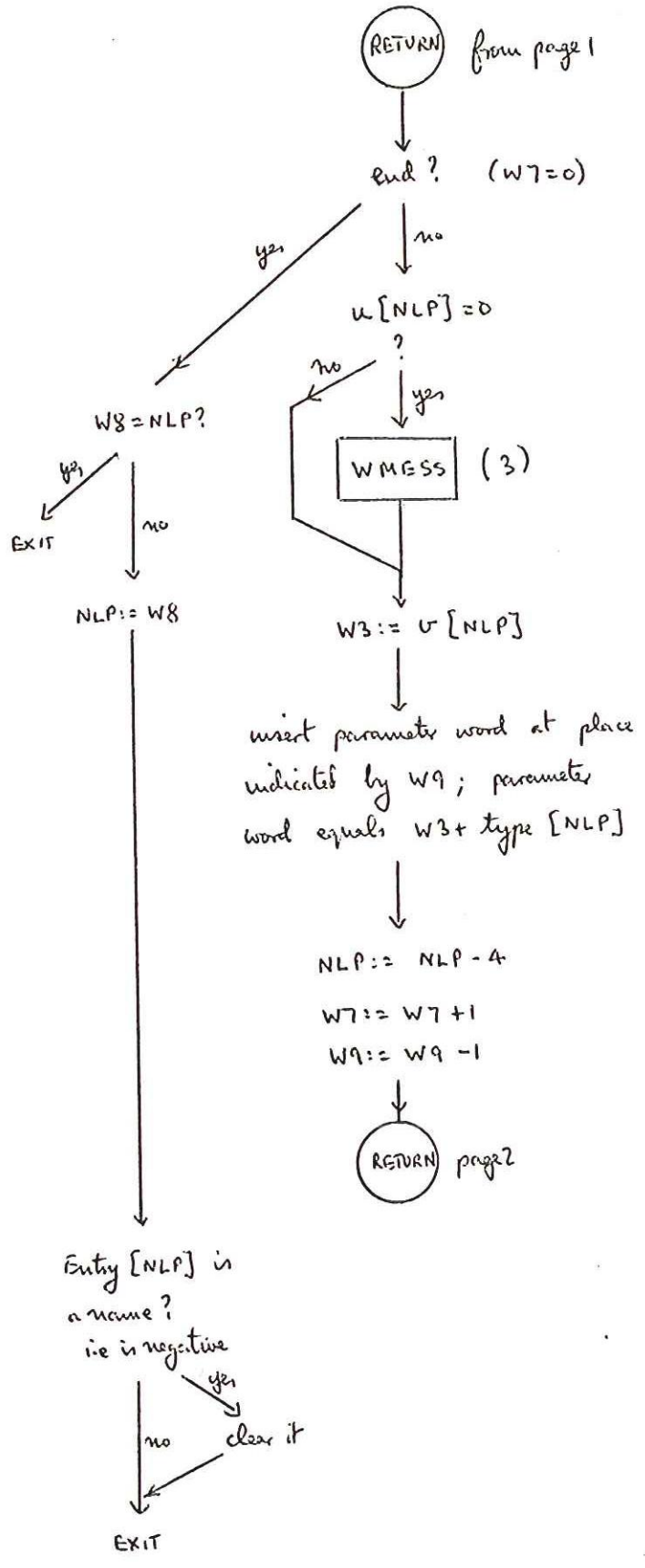
v bit = 1 during proc. body - used to detect recursion

W7 := -DIM[NLP]  
 W8 := eventual NLP  
 W9 := NLP := NLP - 4

W8 := NLP -  
 4 \* ((DIM + 3)  
 div 4)

RETURN page 2

CALLIED FROM PROCIED SEMICO



The first parameter word is adjacent to the procedure name.

There may be a vestige of a name occupying word 0 of the parameter word group of 4.